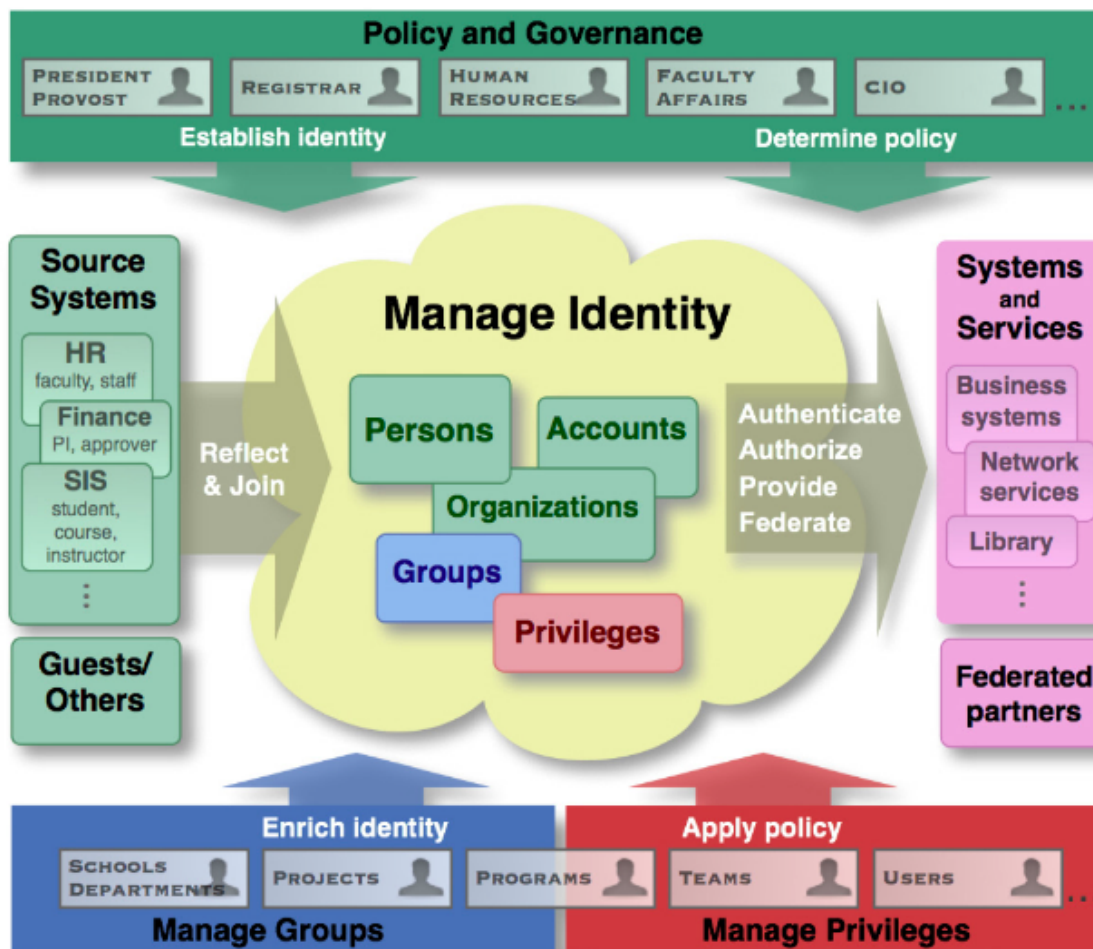


OpenRegistry Initiative

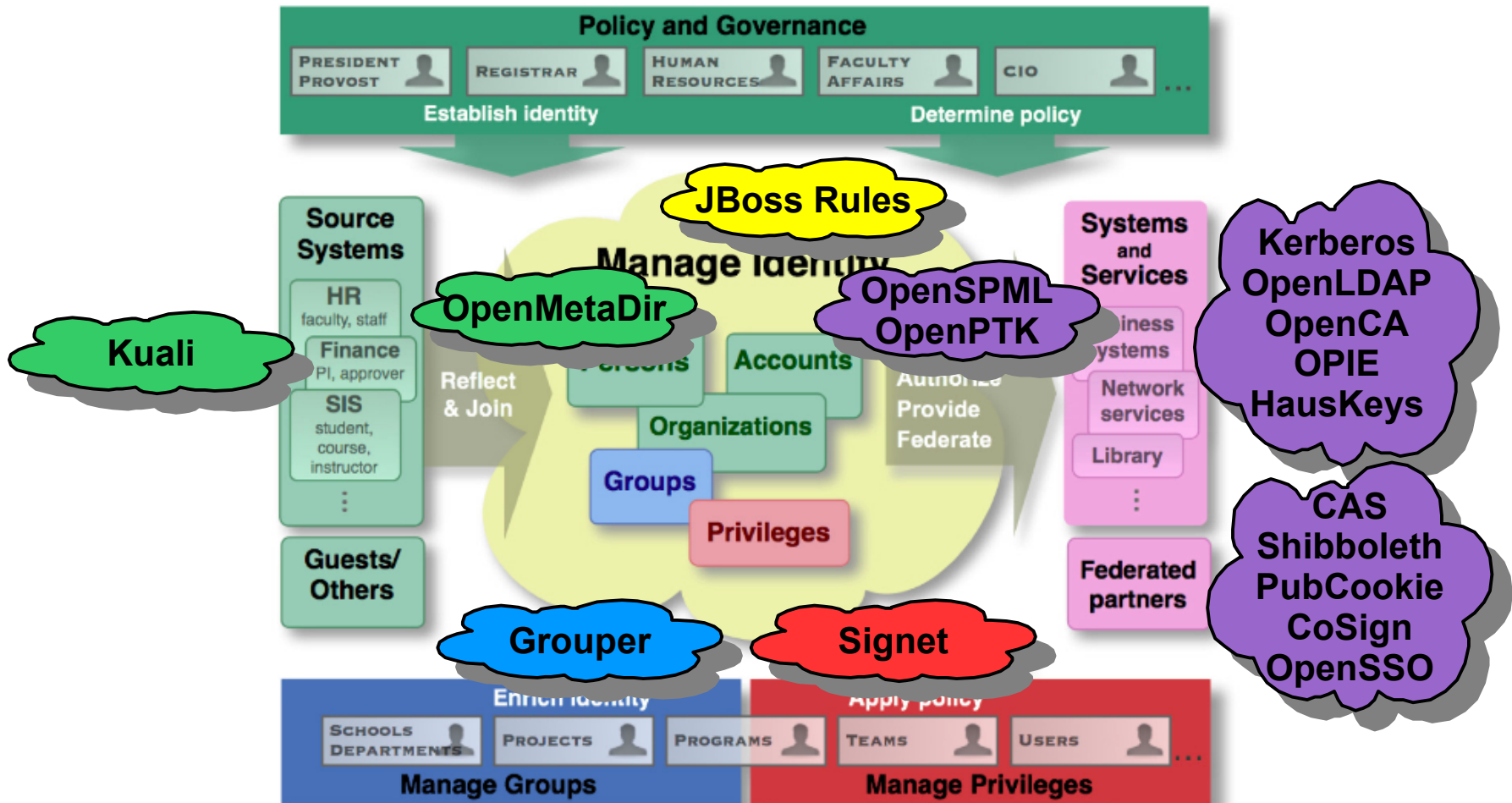
*Revisiting the Management
of Electronic Identity*

Benjamin Oshrin
OIT Identity Management Group
Rutgers University
October 2008

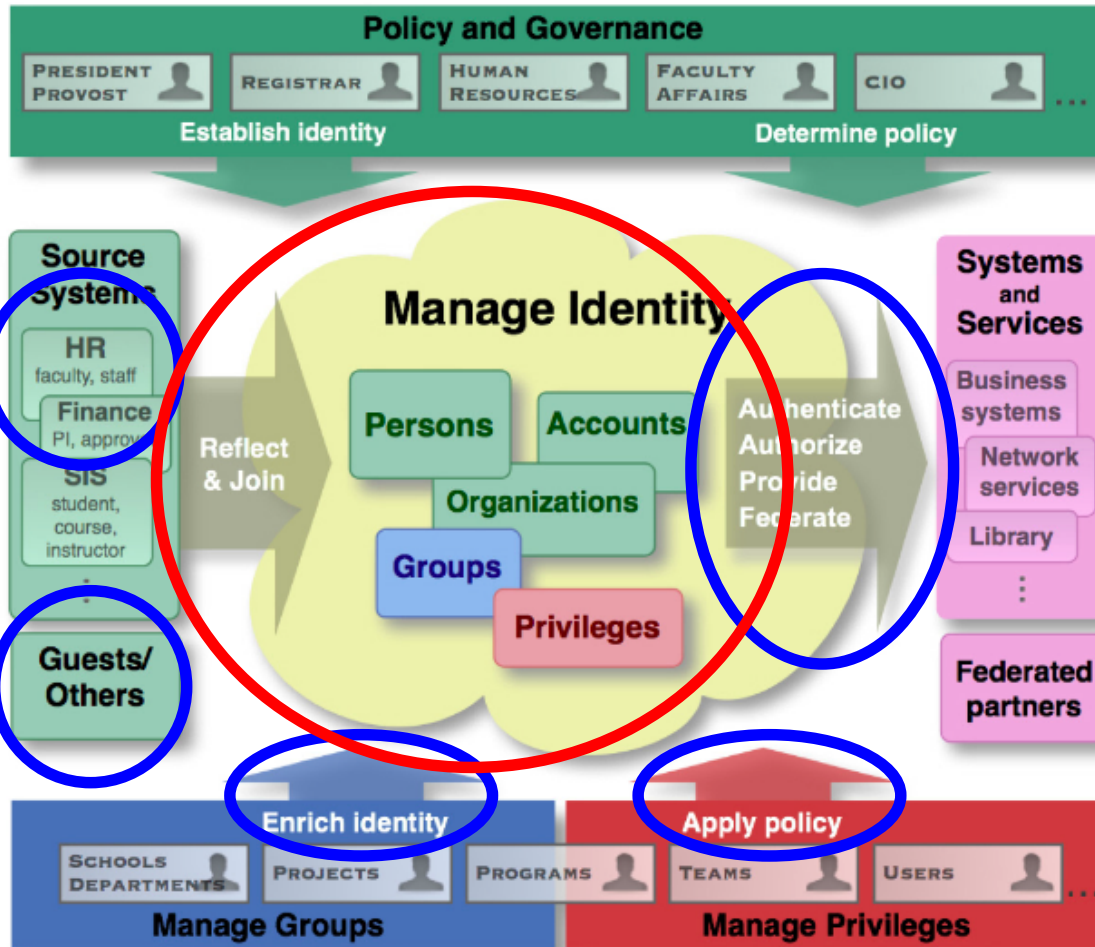
I2 Identity & Access Management Model



OpenSource Identity Management Cloud



I2 Identity & Access Management Model



OpenRegistry Core

OpenRegistry Periphery

What Is OpenRegistry?

- An OpenSource Identity Registry, a place for data about people affiliated with your institution
- Core functionality
 - Interfaces for web, batch, and real-time data transfer
 - Identity data store
 - Identity reconciliation from multiple systems of record
 - Identifier assignment for new, unique individuals
- Additional functionality
 - Data beyond Persons: Groups, Courses, Credentials, Accounts
 - Business Rule based data transformations
- More than just a Registry, some periphery too
 - Directory Builder
 - Provisioning and Deprovisioning

Why OpenRegistry?

- “Off the shelf” solutions usually end up requiring significant customizations and integration work and/or solve only a portion of an institution's needs
- Lots of institutions still rolling their own
- Combined institutional efforts better leverage scant resources and allow for learning from others' experience (eg: Sakai, uPortal, CAS, Shibboleth, Quali)
- OpenRegistry is tailored to the needs of higher ed

Inspirations

- Columbia University Identity Management System
- Rutgers People Database
- Georgetown Model*
- Higher Ed Standards (eg: eduPerson)
- Evolving Standards (eg: NIST LoA)
- Review of interested peer institutions
- Decades of combined experience from before the field was called “Identity Management”

OpenRegistry @ Rutgers University

- Capture Identity Data for *all* populations affiliated with the University, including regular students, continuing ed students, joint program students, alumni, new employees, faculty, staff, retirees, and guests
 - Now: Primarily students, faculty/staff, and some “guests”
- Faster propagation of data, real time where possible
 - Now: Nightly to biweekly batch feeds
- Consistent data definitions, contracted via versions
 - Now: Hard to find definitions, unclear when they change
- Delegated operations where possible
 - Now: Heavy dependency on Help Desk and Central IT

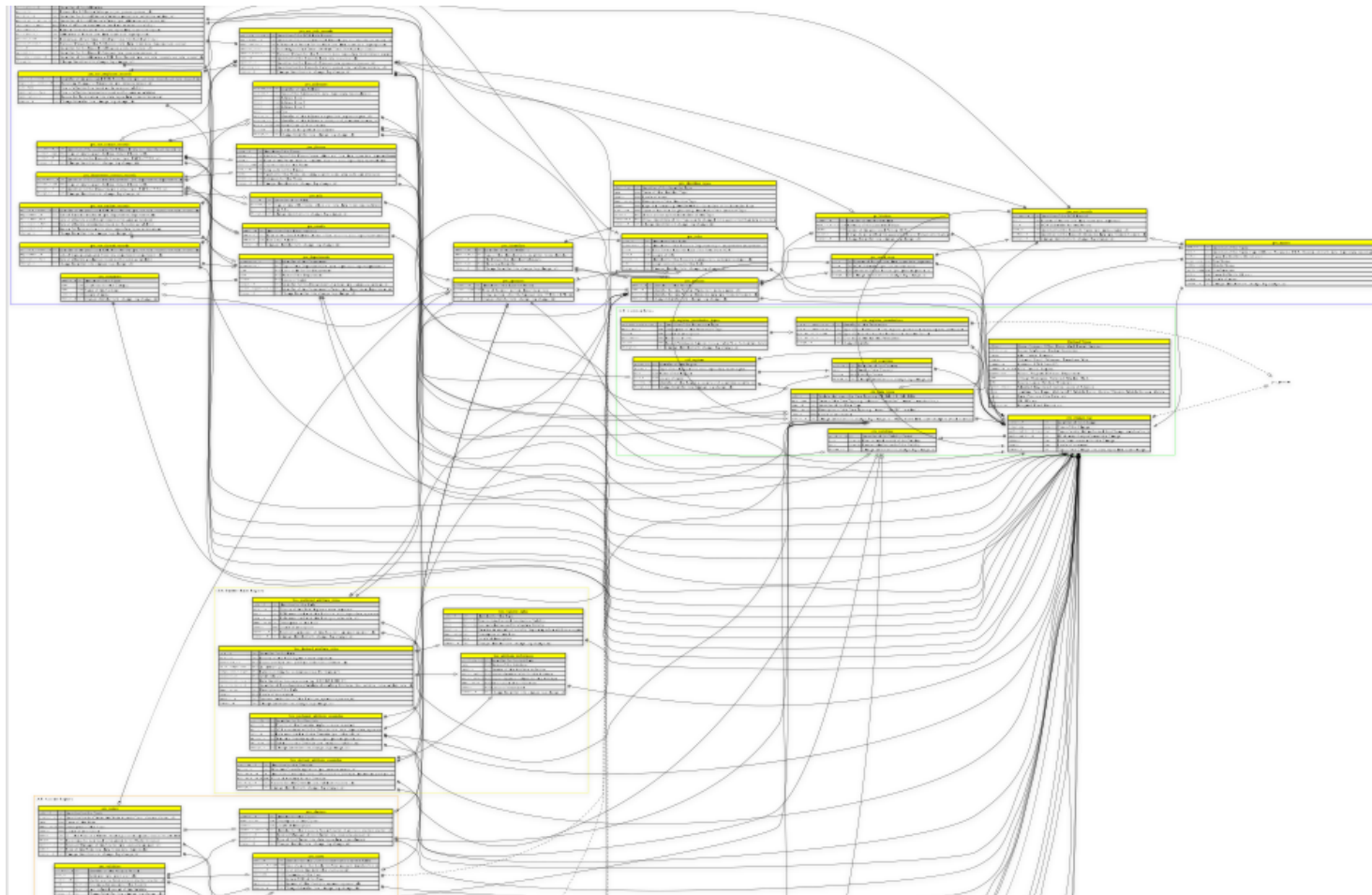
OpenRegistry (Select) Use Cases

- Fast identity creation for new hires (provisional hire)
- Real-time System of Record (SOR) data where SOR is capable, batch otherwise
- Guest sponsorship
- Directory construction, including real-time updates
- Provisioning/deprovisioning
- Data dictionary and versioned attribute definitions
- Password trust/levels of assurance
- ID Card integration
- Activation keys
- Roles and role specific data
- Audit history

Data Model

- Generic enough to work for multiple institutions
- Specific enough to work for yours
- Internationalized
- Well documented

Data Model Overview

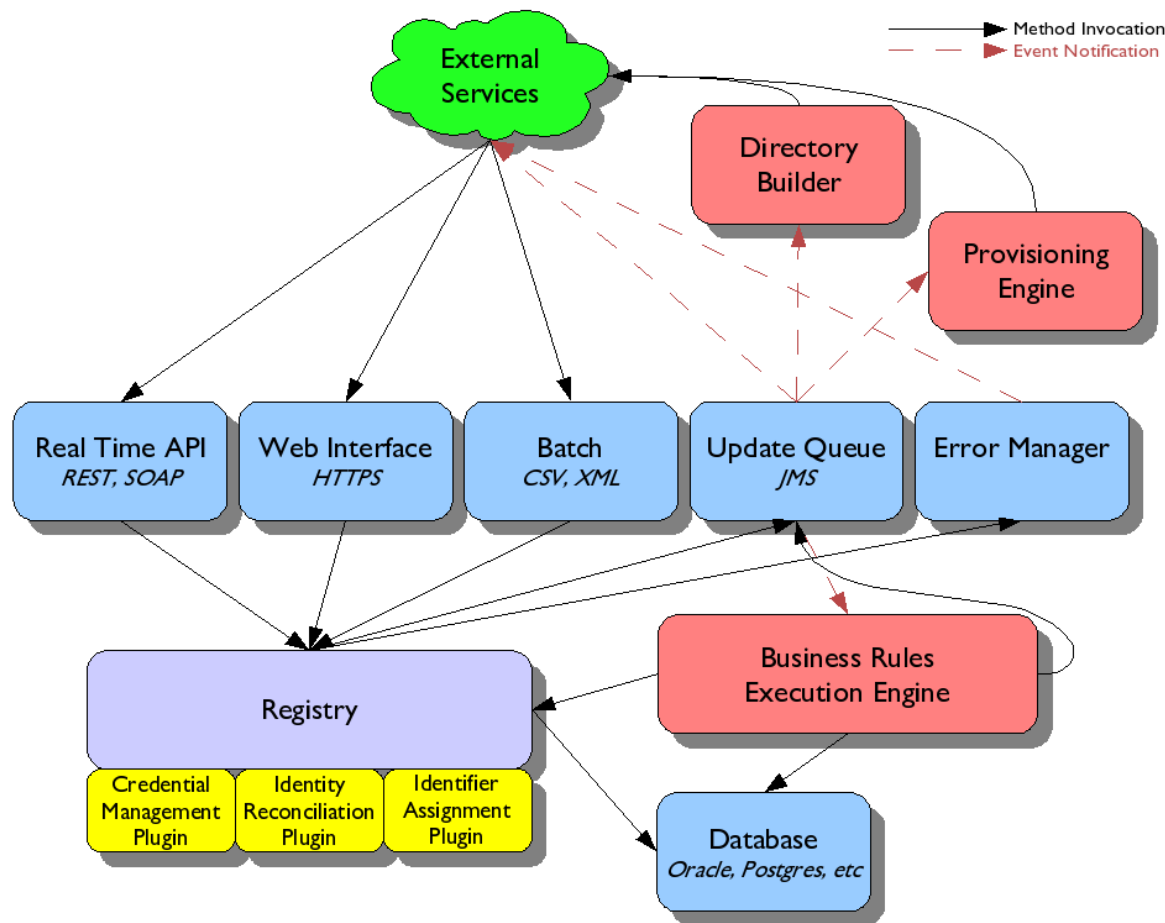


Data Model Excerpt

prc_affiliations		
affiliation_id	int	Identifier of this Affiliation
person_id	int	Person this Affiliation belongs to (prc_persons:person_id)
validity_id	int	Identifier for this Affiliation's Validity period (ctx_validities:validity_id)
parent_affiliation_id	int	Identifier of this Affiliation's Parent (prc_affiliations:affiliation_id)
termination_date	date	Date of effective termination (need not be same as validity)
termination_t	int	Reason for termination (ctx_data_types:data_type=termination)
affiliation_t	int	Affiliation of Person (ctx_data_types:data_type=person)
percent_time	int	Percentage of Full Time (100=Full Time, 50=Half/Part Time)
person_status_t	int	Status of Person for this Affiliation's (ctx_data_types:data_type=person_status)
role_id	int	Identifier for this Record's Affiliation's (prs_roles:role_id)
sponsor_id	int	Identifier for this Record's Sponsor (prs_sponsors:sponsor_id)
sor_role_record_id	int	Identifier of this Affiliation's SOR Role Record (prs_sor_role_records:sor_role_record_id)
change_id	int	Change Identifier (ctx_change_log:change_id)

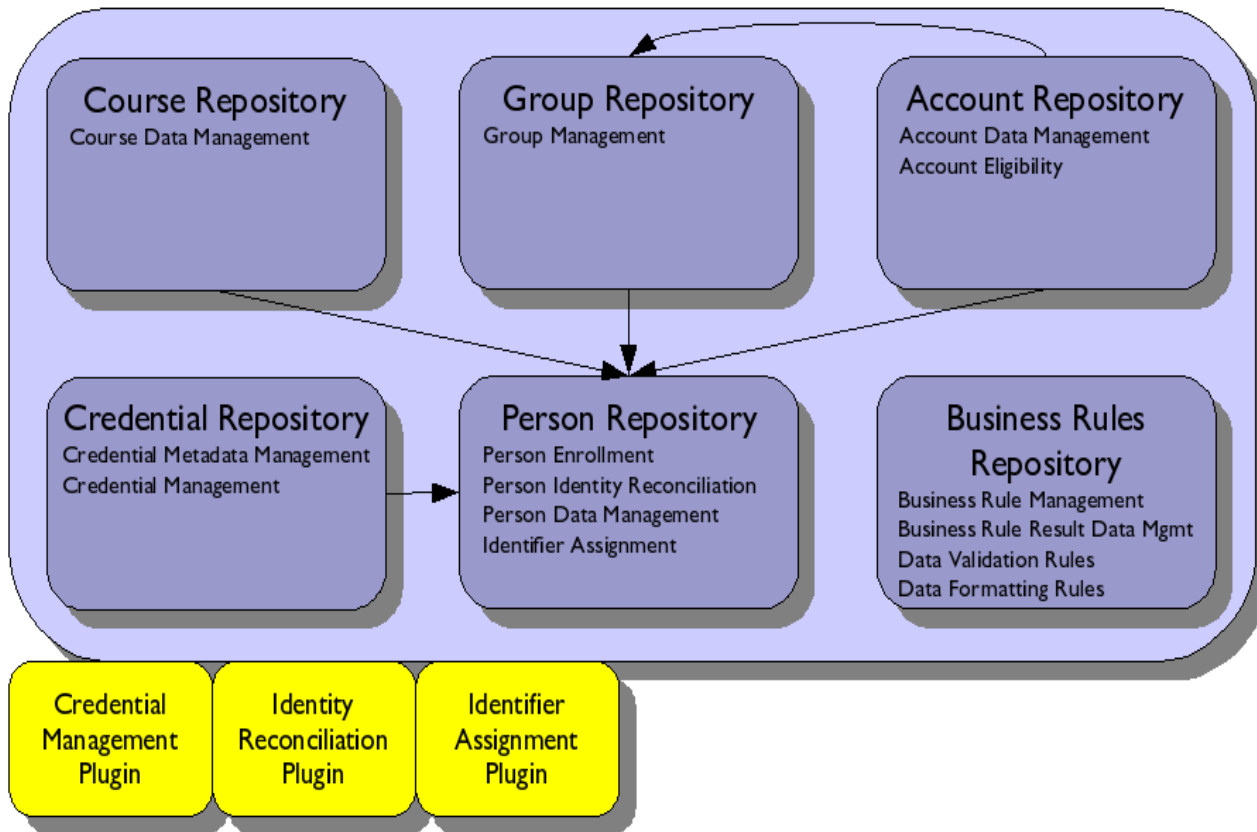
prs_sor_employee_records		
sor_role_record_id	int	Identifier of the associated SOR Role Record (prs_sor_role_records:sor_role_record_id)
supervisor_person_id	int	Reporting Manager of Employee (prc_persons:person_id)
hire_date	date	Date of effective hire (need not be same as validity)
termination_date	date	Date of effective termination (need not be same as validity)
termination_t	int	Reason for Termination (ctx_data_types:data_type=termination)
change_id	int	Change Identifier (ctx_change_log:change_id)

Component Architecture

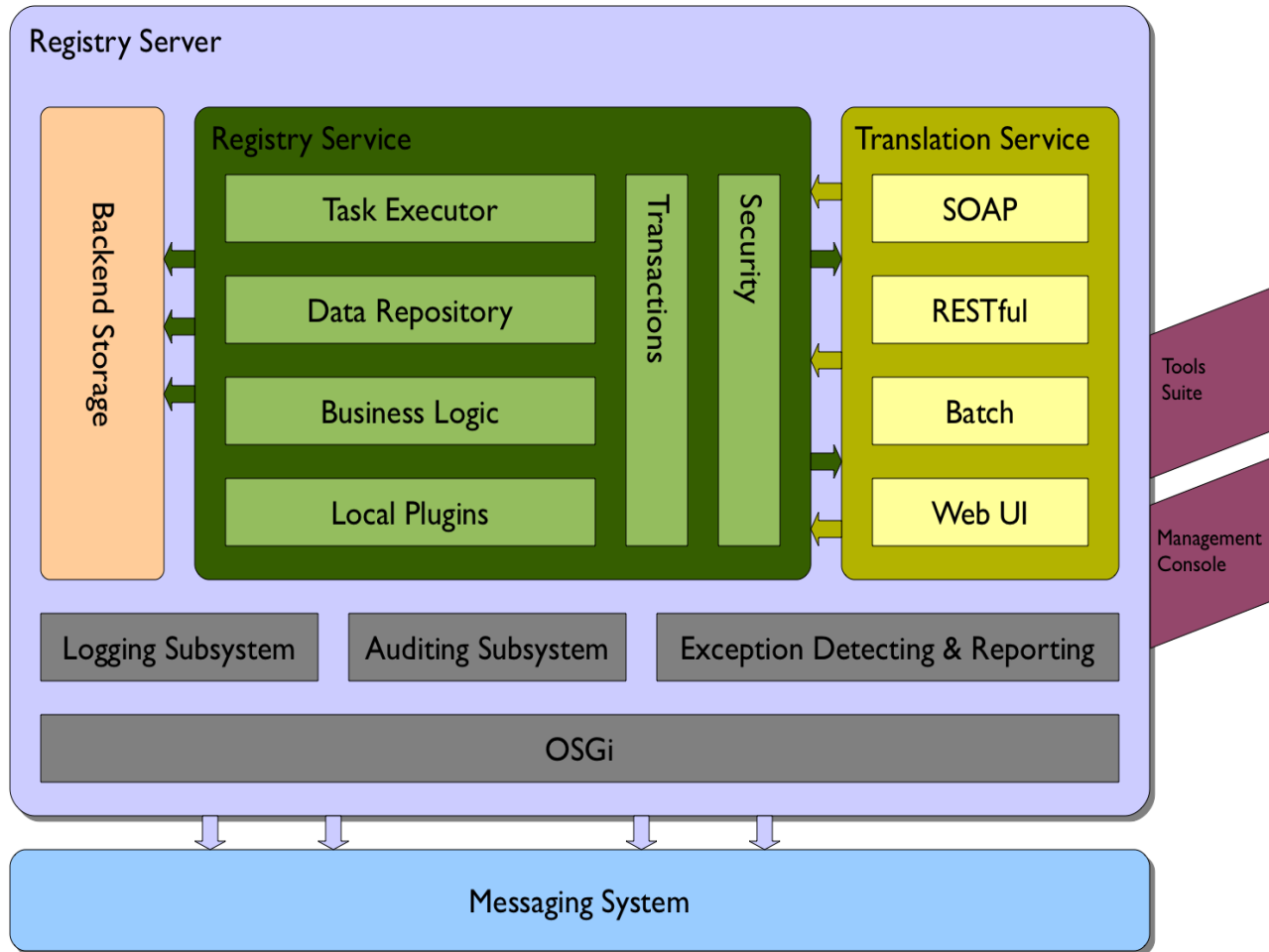


Component Architecture

A given Repository could have multiple implementations. For example, Group could be native or *Grouper*. —————▶ Data Dependency



Component Architecture



[Identity Management](#)

OpenRegistry @ rutgers.edu

Welcome, Jane Smith, administrator for Mathematics and Physics. ([Logout](#)).

Manage Identity Data For Your Department

- ▶ [View, Add, Update, and Remove People](#)
- ▶ [Reset a Password](#)

Manage Your Own Identity Data

- ▶ [Manage Your NetID](#)
- ▶ [Update Your Contact Information](#)
- ▶ [Manage Your Groups](#)

For questions or comments about this site, [contact us](#)

© 2008 Rutgers, The State University of New Jersey. All rights reserved. Last modified: 09/25/2008



[Identity Management](#)

OpenRegistry: Your Department

Welcome, Jane Smith, administrator for Mathematics and Physics. ([Logout](#)).

Manage Identity Data For Your Department

- ▶ [Add a New Person](#)
- ▶ View more details or update a Person (including provisional termination) by clicking on the appropriate record
- ▶ Delete a Person by checking the box in the 'Delete' column, then clicking 'Delete Selected Entries', below

NetID	Name	Title	Affiliation	Department	Good From	Good Until	Delete?
aa12	Alex Alexander	Professor of Addition	Faculty (Provisional)	Mathematics	10/1/2008	10/31/2008	<input type="checkbox"/>
bb34	Beth Bethlehem	Professor of Invisible Particles	Faculty	Physics	8/1/1994		<input type="checkbox"/>
cc56	Charles Charleston	Guest Lecturer of Multiplication	Visiting Scholar	Mathematics	8/15/2007	12/31/2007	<input type="checkbox"/>

[Delete Selected Entries](#)

For questions or comments about this site, [contact us](#)
 © 2008 Rutgers, The State University of New Jersey. All rights reserved. Last modified: 09/25/2008

OpenRegistry: Add a Person

Welcome, Jane Smith, administrator for Mathematics and Physics. ([Logout](#)).

Step 1: Personal Information

Please enter as much information as possible to help us determine if we already know about this person.

First Name*	<input type="text"/>
Middle Name	<input type="text"/>
Last Name*	<input type="text"/>
Suffix	<input type="text"/>
Date of Birth*	<input type="text"/>
NetID	<input type="text"/>
SSN	<input type="text"/>

*Required

[Continue](#)

For questions or comments about this site, [contact us](#)

© 2008 Rutgers, The State University of New Jersey. All rights reserved. Last modified: 09/25/2008

OpenRegistry: Add a Person

Welcome, Jane Smith, administrator for Mathematics and Physics. ([Logout](#)).

Step 2: Possible Matches

We have found the following people who may be the person you are trying to add.

- ▶ View more details for a Person by clicking on the appropriate record
- ▶ If one of these records matches the person you are trying to add, click 'Add This Person' for that record
- ▶ If none of these records match, select 'Add New Person', below

NetID	Name	Title	Affiliation	Department	Good From	Good Until	Add?
jas12	John Adam Smith	Administrative Assistant	Staff	English	6/15/2004		<input type="button" value="Add This Person"/>
jas34	John Alex Smith	Unit Computing Manager	Staff	Athletics	6/15/2004	5/30/2006	<input type="button" value="Add This Person"/>

[Add New Person](#)

For questions or comments about this site, [contact us](#)

© 2008 Rutgers, The State University of New Jersey. All rights reserved. Last modified: 09/25/2008

[Identity Management](#)

OpenRegistry: Add a Person

Welcome, Jane Smith, administrator for Mathematics and Physics. ([Logout](#)).

Step 3: Role Information

Please enter information specific to the role your are adding.

Title	<input type="text"/>
Department	Mathematics <input type="button" value="v"/>
Affiliation	Faculty (Provisional Type 1) <input type="button" value="v"/>
Campus	Camden <input type="button" value="v"/>
Good From	<input type="text"/>
Good Until	<input type="text"/>
Hide in Directory	<input type="checkbox"/>

[Continue](#)

For questions or comments about this site, [contact us](#)

© 2008 Rutgers, The State University of New Jersey. All rights reserved. Last modified: 09/25/2008

[Identity Management](#)

OpenRegistry: Add a Person

Welcome, Jane Smith, administrator for Mathematics and Physics. ([Logout](#)).

Step 4: Identity Activation

John Aron Smith has been successfully added.

- ▶ Please print this page and hand it to John for NetID activation purposes
- ▶ The address for activation of NetIDs is <https://netid.rutgers.edu/activate>
- ▶ The activation key listed below may only be used once

NetID	jas97
Activation Key	b734ff334a

[Add Another Person](#)

[Return](#)

For questions or comments about this site, [contact us](#)

© 2008 Rutgers, The State University of New Jersey. All rights reserved. Last modified: 09/25/2008

OpenRegistry Initiative Milestones

- R1M1: Requirements
- **R1M2: Design**
- R1M3: Project Infrastructure
- R1M4: Project Services
- R1M5: Person Registry
- R1M6: Business Rules Registry
- R1M7: Batch Interface
- R1M8: Web Interface
- R1: First Production Functionality
 - Meets Rutgers RIAR-1 requirements

How You Can Help

- Vet the data model and architecture against your institution's specifics
- Contribute resources to the initiative
- Consider adopting the product as it matures

Additional Information

- <http://idms.rutgers.edu/openregistry> (for now)